

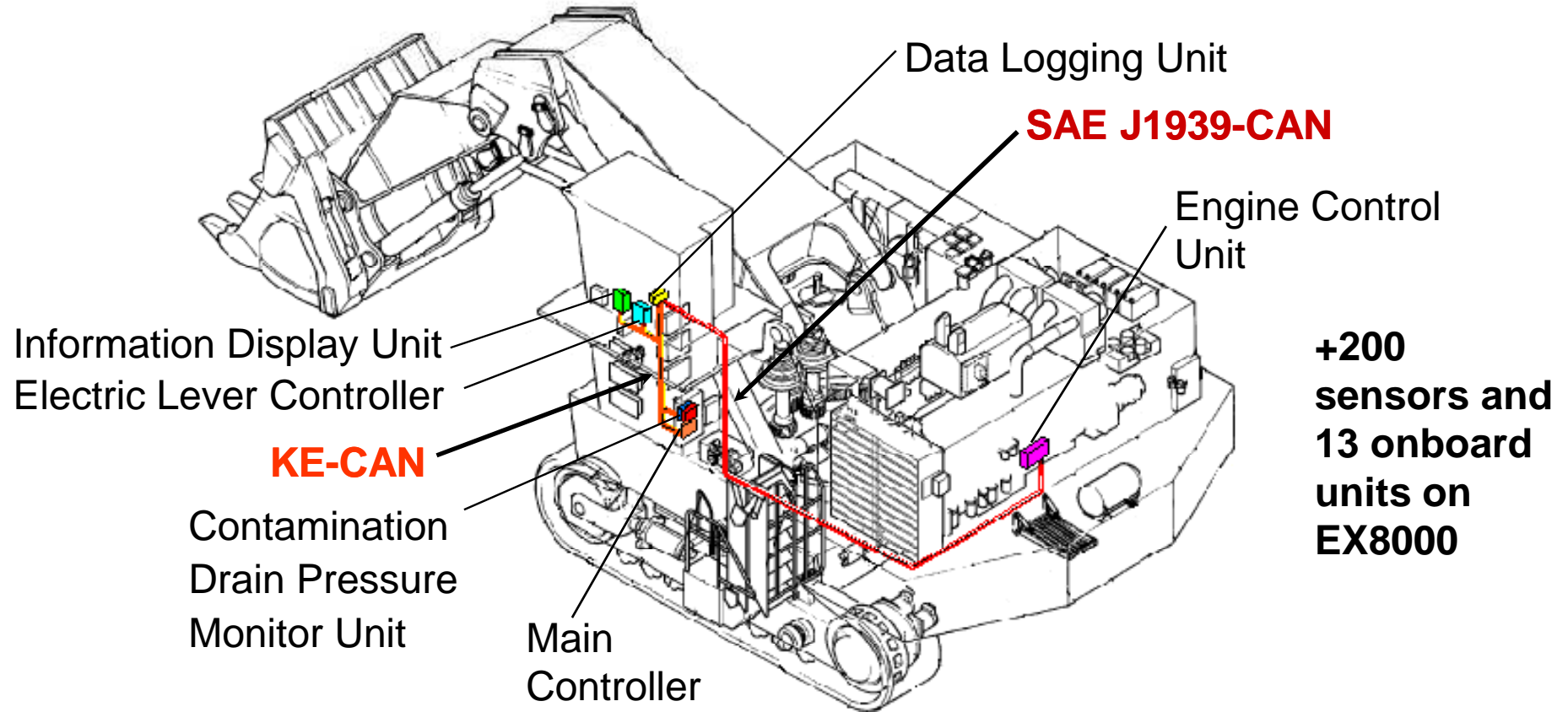
Sensing Criteria

Monitored Items

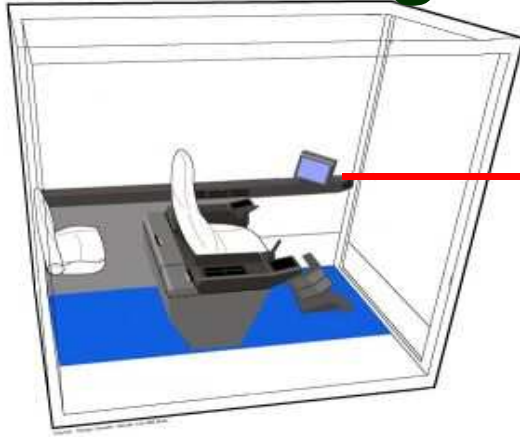
Criteria	Monitoring Failure, Malfunction	
Engine Related Failures	1	Coolant overheat
	2	Coolant leakage
	3	Engine overrun
	4	Seisure (piston, bearing)
	5	Engine power down
	6	Abnormal conbustion
	7	Abnormal fuel burn
	8	Emergency stop, sudden engine stop
	9	Air cleaner clogging
Hydraulic System Failures	10	Hydraulic oil overheat
	11	Pump breakage
	12	Travel motor breakage
	13	Swing motorbreakage
	14	Abnormal control
	15	Degraded hydraulic oil
	16	Cylinder pressure (arm cylinder)
17	Immobilized solenoid valve	
Pump Transmission Failures	18	Excessive wear, abnormal lubrication

Controller Network

To efficiently collect and process the data, Dash 6 machines is equipped with numerous controllers (computers) organically connected by CAN (Controller Area Network)



Monitoring System



Quick Failure Diagnosis

LCD

Real time working condition display



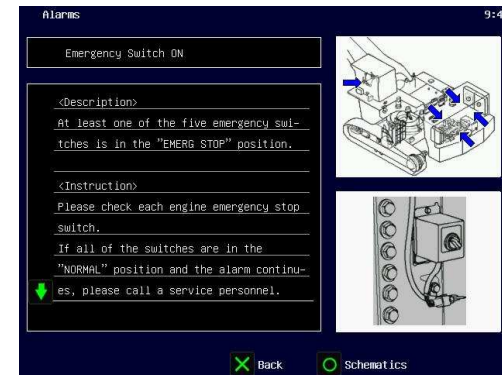
Periphery watch monitor

Easy to read meters and alarm lamps



Display for EX3600-6

Failure diagnosis on display



Early detection of failure for preventive maintenance

- Improved monitor function → **New DLU**
- Expansion of monitor criteria
→ **New function & New sensors** installed
- Increase of monitor data → **CAN Network** installed

Snap Shot

Auto data collection & display of specific data around the failure

Maintenance Record

Listing of consumables replacement record

Multi-Monitor Display



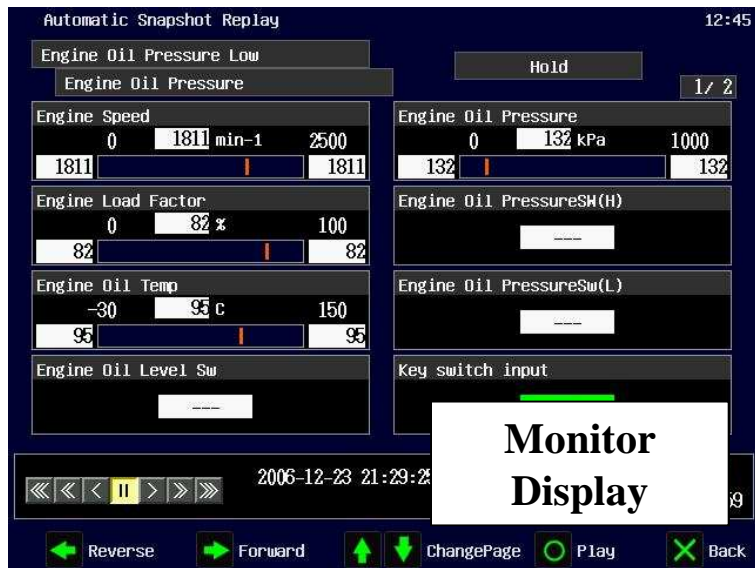
Current Alarms List 10:34

Total 1

No.	Cummins	HCH	Contents
1	00143	00011-018	Low Oil Press

Alarm List

Back Details Reload



Display changes as follows;
alarm list with key pad control⇒
description, countermeasure⇒
schematics or specific information

Enables the on board troubleshooting without manual with all the sensors for malfunction detection

↓
Less Down Time